

Belfairs Methodist Church

Where old friends meet and strangers feel at home

Newsletter

Issue 2010

February 2023

Minister:

Rev. Clifford Newman

1 Glebe Close

Rayleigh SS6 9HL

Tel: 01268 784402

E-mail: cliffordnewman@aol.com

Editor:

Mrs. Sue Spaul

Tel: 01702 521344

E-mail: sue.spaul@hotmail.co.uk

Happy Valentine's
Day!



Data Protection Privacy

By submitting an article for publication in the Belfairs Newsletter, you are **consenting** to your name being attributed to the article which is made **publicly available** via the Belfairs Methodist Church Website.

If you do **NOT** want your name to be published, please advise the Editor when submitting the article.

Please read our Privacy Policy for further information. This can be found on the church website or on our church noticeboards.

Thought for the month

God never tires of forgiving us;

We are the ones who tire of seeking his mercy.

Our mission is to provide an open, welcoming and accepting, living place of Christian worship and service in our community, in which we seek to serve and follow Jesus Christ.

www.belfairsmethodistchurch.org.uk

Dear Friends,

I apologise in advance for having to provide a newsletter in which I must ask for your immediate attention. This month, we will be having our quarterly Church Council in which we will have to focus on the current financial situation. The past few years has been difficult for everyone, especially for the Churches in this country. For many years Church membership and attendees has decreased to about half of that 20 years ago. The pandemic has left most buildings with fewer lettings than before, and the current fuel crisis has had a severe impact on the financial situation as it pays business rates. Our income is much less than our outgoings. If we continue to maintain the same position, then Belfairs Methodist Church will run out of its reserves in the next couple of years maybe even sooner.

We need money to pay the Circuit assessment and upkeep of the building. The Circuit assessment is not just to pay for Ministers but to help sustain the whole Methodist Church. I have given you a diagram and short resume of the Methodist Structure. You can see that this assessment includes the cost of administration to look after approximately 170,000 members, 600,000 users and 4,000 Church buildings.

I ask everyone to review their giving, appreciating that this is a difficult time for everyone. If each member and friend of the Church contributed the same as a coffee bought in a café (approximately £3) each week, this would go a long way to easing the financial difficulty. Also, if you know of any group or organisation that is looking for somewhere to base themselves then please let a Steward know. Thank you for your consideration of this matter.

Also, I offer my thanks for all that you contribute towards the work and mission of Belfairs Methodist Church.

Yours in Christ

Rev Clifford Newman

METHODIST STRUCTURE

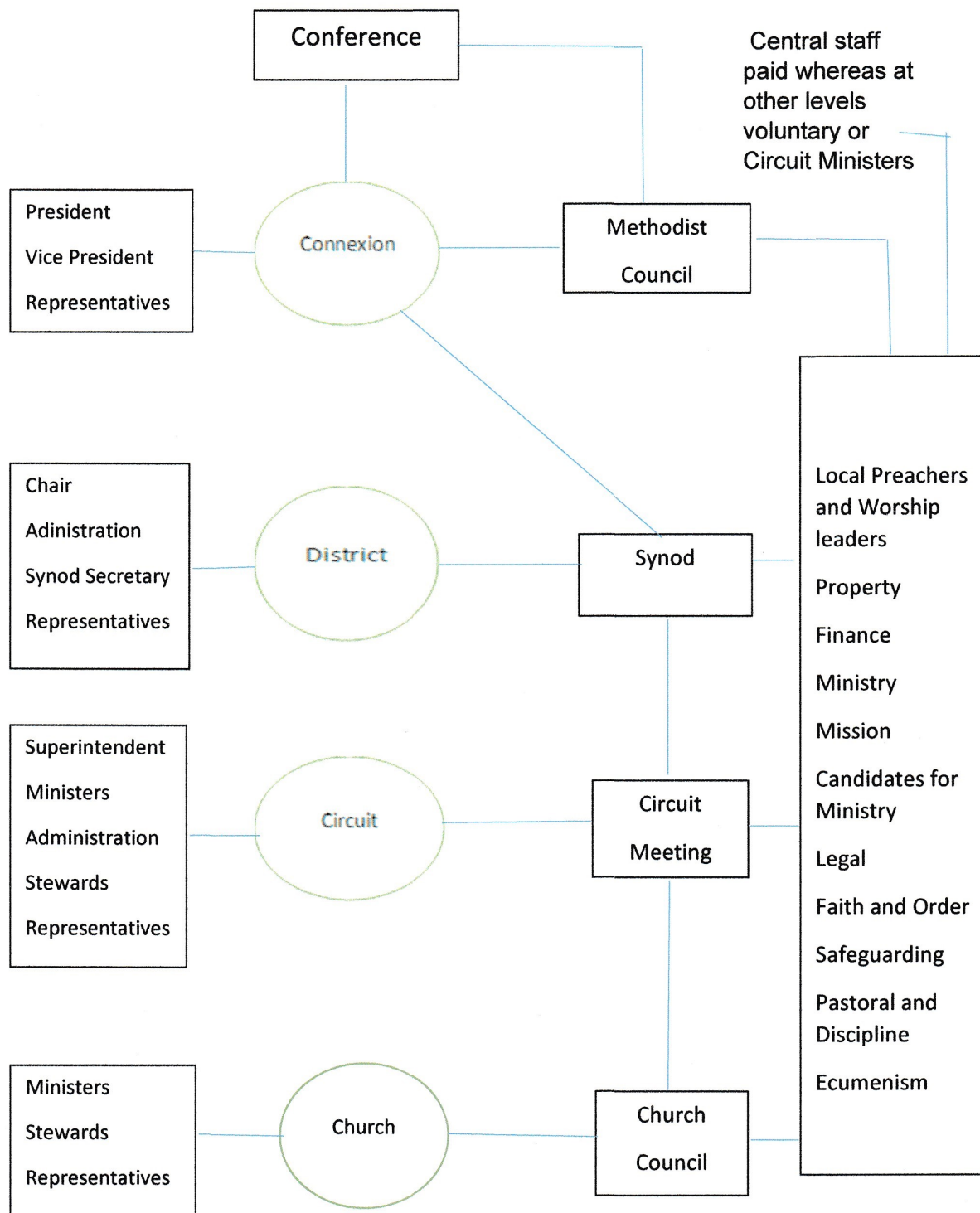
The Circuit is the main part of the Methodist Church structure. This Circuit is responsible for the local Churches in a specific area. Our Belfairs Methodist Church is one of seventeen in the Southend and Leigh Circuit (which includes the Rochford and Castle Point areas). The Circuit is to ensure that the worship and proper administration of each Church is carried out. The Superintendent oversees the Circuit with the assistance of the Circuit Ministers and Stewards. A popular misconception is that the local Church owns their building; it does not, it is the property of the Circuit. The Circuit is answerable to the District and more importantly the Connexion which is the central administrative body of the Methodist Church. The local Church's main meeting is the Church Council which is responsible for the mission and maintenance of the Gospel within its locality. There is a financial commitment to be met which is called the assessment, this is the finance required to pay for the Ministry of the whole Methodist Church (this includes the running of the District and Connexion).

The District ensures that each Circuit is fulfilling their obligations and acts as a mediator between the Circuit and Connexion. The District and Connexion train, supervise and allocate Ministers to the various Circuits. They also supervise the discipline and make sure legal requirements are met; they also offer advice and training to all areas of the Church.

Ultimately all areas of the Church are answerable to and follow the decisions of Conference. Conference is held yearly and is made up of representatives from local Churches (through the election from Circuit and District) and Connexional Officers. Conference maintain Faith and Order.

Obviously, this is a simple overview as to run any large organisation is complex. However, I hope that this gives a broad insight to the workings of your Methodist Church.

Rev Clifford Newman

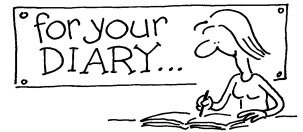


**METHODIST
STRUCTURE
(Simplified)**

Sunday Services February 2023

5th	11.00 a.m.	Rev. Clifford Newman - Holy Communion
	6.30 p.m.	Circuit Service at Belfairs (see poster in newsletter for further information)
12th	11.00 a.m.	Mrs. Sue Hockett
19th	11.00 a.m.	Local arrangement - Parade service including Girls Brigade rededication
26th	11.00 a.m.	Mr. Paul Saunders

Other February dates for your diary



4th	Coffee Morning - Girls Brigade including cake stall
9th	Thirsty For?? at 7.00 p.m. - Café style worship - all are welcome
14th	Valentines Day
21st	Shrove Tuesday
22nd	Ash Wednesday
25th	Church Council meeting at 10.00 a.m.

Point of Contact

Below is shown details of the Sunday Stewards, Communion Stewards and musicians relevant for this month.

Sunday 5th February

Sunday Steward a.m. - Pat Crabb

p.m. Phil Gladman

Communion Stewards - Neeltje Charles & Dawn Howard

Musician a.m. - MIDI Box

p.m. - Circuit Band

Sunday 12th February

Sunday Steward - Mike Spaul

Musician - Patrick Dromgoole

Flowers - VACANT - arranged by Smitha

Sunday 19th February

Sunday Steward a.m. - Phil Gladman

Musician a.m. - Anthea Meek /Mike Spaul

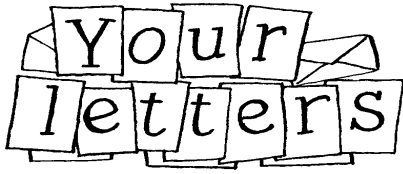
Sunday 26th February

Sunday Steward - Jan Andrews

Musician - Patrick Dromgoole

Flowers - VACANT - arranged by Margaret

Letters Page/Church family news



To all my friends at Belfairs

I wish to thank you all for all the cards, flowers and phone calls while I have been ill. Also the flowers I received recently from the church, they certainly cheered me up.

Now I am on the mend, it is lovely to be back in church too.

Thank you again
Love Sylvia

Thank you to everyone at Belfairs for my surprise Christmas present, with a special thank you to Anthea for delivering it.

I would like to wish you all a Happy New Year.

John Collier



Southend & Leigh
Methodist Circuit

CIRCUIT SERVICE

WITH

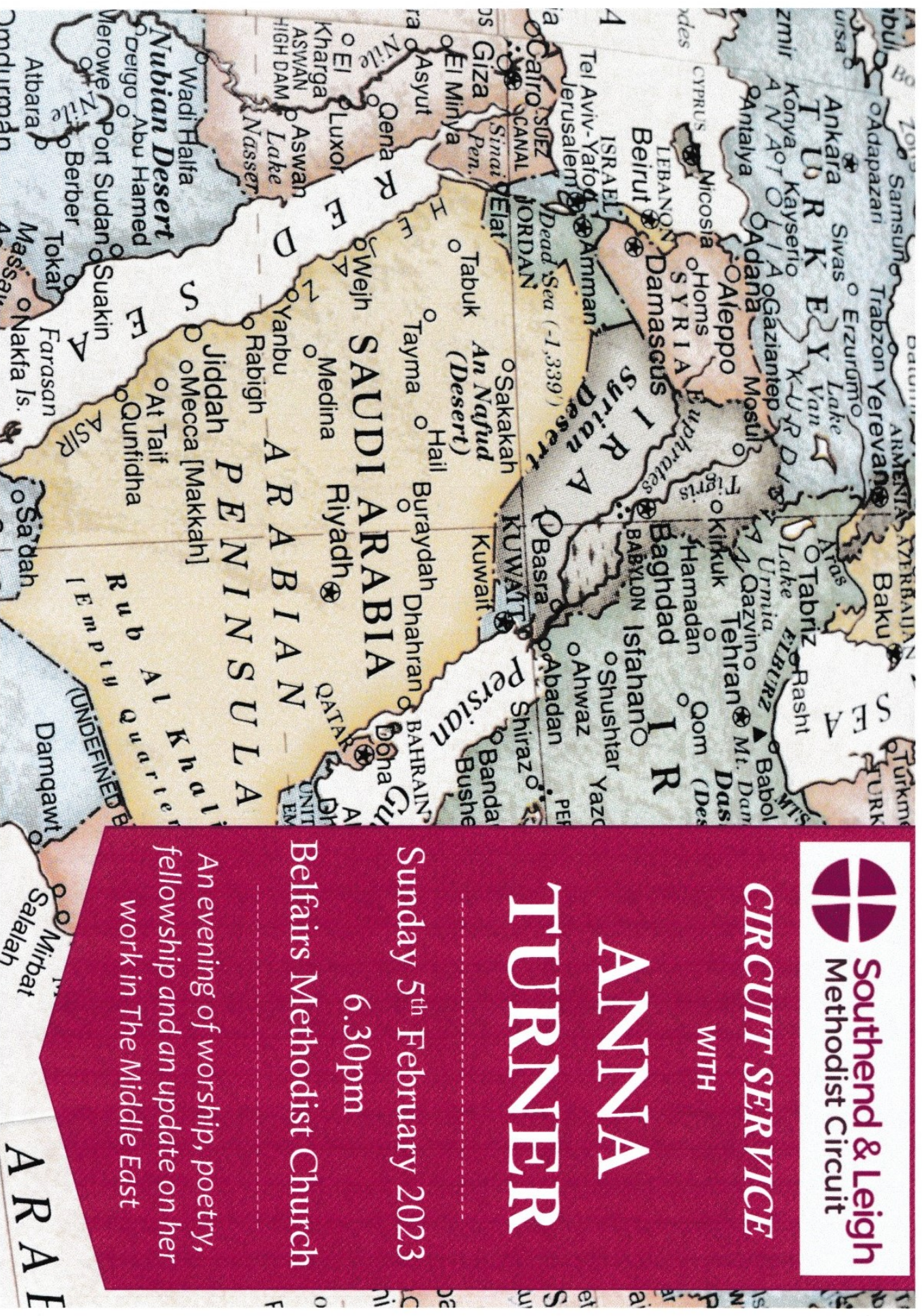
ANNA TURNER

Sunday 5th February 2023

6.30pm

Belfairs Methodist Church

An evening of worship, poetry,
fellowship and an update on her
work in The Middle East



Completed Tapestries. Thank you!

A huge thank you to all who contributed to the Tapestries, which are apparently called "Paraments", according to Rev Teresa. They are lovely.

The Communion Table runner conceals a dedication to Sir David Amess and also the names of all who donated. There was over £100 left to donate to Rev. Teresa's own Charity for Mental Health.

They were dedicated, along with the refurbished Church, on Sunday January 22nd by Rev. Clifford.

Anthea.



Please remember you are free to put your prayer concerns on the board at the back of the church. If it is not for you, please make sure you have the named persons consent .

Please add your name and date to the request on the reverse of the white cards provided which are by the board. These will be removed after two months, but can be updated if necessary (please make sure you re-date the update).

If you have any questions or queries, please speak to Sue.



A.C.T.I.O.N.
Afternoon Club on Thursday In Our Neighbourhood

This month we are meeting on Thursday, 23rd of February at 2pm.

Jennifer Brown is going to give a talk about a **charity** who arrange **Afternoon Teas** for the lonely and also provide transport.

Come along and join us for an afternoon of friendship and fellowship.

Neelte

Coffee Morning - Raising Funds for South Essex MND Association

What a real pleasure, to be involved in running the coffee morning , on Saturday 7th January.

Pam and I expected to rush around sorting things out but, low and behold, someone had set up the whole shebang! Our sincere thanks to Mike, for all the preparation.

A short time passed, then a mountain of homemade cakes and pastries appeared. Once again, Margaret and Sue, you did us proud. Thank you so much for all your efforts.

The new surroundings and operation were a little strange to some of us, at first, but I think all involved soon got the hang of things! The ambience, of the foyer seemed different to previously.

Our warm thanks go out to, all those who attended, donated, pitched in to help and ultimately managed to raise the remarkable sum of £245 for South Essex Motor Neurone Disease Association.

Each one of you helped to make the event so enjoyable and successful!

Thanks to you all

Pam and John

PS

South Essex MND Association uses a very large % of its funds on assistance and care for local MND sufferers.

It is primarily made up of volunteers, who visit patients and give advice to carers. Source and provide equipment to make things easier for carers and patients. Arrange holidays for families and carers.

And much more!

The real celebrities in this World! They deserve to be Celebrated!

Little girls are the nicest things that happen to people. They are born with a little bit of angel-shine about them, and though it wears thin sometimes there is always enough left to lasso your heart.

Even when she is sitting in the mud, or crying temperamental tears or parading up the street in mother's best clothes, a little girl can be sweeter and badder oftener than anyone else in the world.

She can shuffle around and stamp and make funny noises that frazzle your nerves. Yet just when you open your mouth, she stands there, demure, with that special look in her eyes.

A girl is innocence playing in the mud, beauty standing on its head and motherhood dragging a doll by the foot.

Girls are available in five colours—black, white, red, yellow or brown, yet mother nature always manages to select your favourite colour when you place your order.

They disprove the law of supply and demand. There are millions of little girls, but each is as precious as rubies.

God borrows from any creatures to make a little girl. He uses the song of the bird, the squeal of a pig, the stubbornness of a mule, the antics of a monkey, the spryness of a grasshopper, the curiosity of a cat, the speed of a gazelle, the slyness of a fox, the softness of a kitten and, to top it all off, He adds the mysterious mind of a woman.

A little girl likes new shoes, party dresses, small animals, first-class noise makers, the girls next door, dolls, make-believe, dancing lessons, ice cream, kitchens, make-up, jugs of water, going visiting, tea parties, and - one boy.

She doesn't care so much for visitors, boys in general, large dogs, straight chairs, vegetables or staying in the back garden.

She's loudest when you're thinking, the prettiest when she has provoked you, the busiest a bedtime, the quietest when you want to show her off, and the most flirtatious when she absolutely must not get the best of you again.

Who else can cause you more grief, joy, irritation, satisfaction, embarrassment and genuine delight than this combination or Eve, Salome and Florence Nightingale?

She can muss up your home, your hair and your dignity, spend your money, your time and your temper, then just when your patience is ready to crack, her sunshine peeks through and you have lost again.

Yes, she's a nerve-racking nuisance, just a noisy bundle of mischief, but when your dreams tumble down and the world is a mess, when it seems you are pretty much of a fool after all, she can make you a king when she climbs on your knee and whispers, "I love you best of all."

I found this while sorting through some of my Dads things and although its probably not politically correct in these days, it did make me smile and I could see a lot of myself in this, so I hope you enjoy reading it too.

Sue Spaul

What's done is done,
What's gone is gone
One of life's lessons
Is always moving on.
It's okay to look back
And think of fond memories
But never let the past
Stop you from moving forward.

True friends aren't the ones who make your problems disappear
They are the ones who won't disappear when you're facing problems.

You are not a burden,
You are not a waste of space,
There is only one of you
And nobody can ever take your place.

Every bad situation will have something positive
Even a dead clock shows the correct time twice a day.

Know who you are, know what you want, know what you deserve.
No one should have to settle for less, take this as a chance to grow.
Say yes to new opportunities, say no if something doesn't feel right.
Do what makes you happy.

You can't change how people feel about you, so don't try.
Just live your life and **Be Happy!**

Never regret a day in your life.
Good days give you happiness
Bad days give you experience
Worst days give you lessons
And best days give you memories.

REGULAR WEEKLY MEETINGS :

10 O'clock Club 10.00 a.m. (except 3rd Sunday Parade Service)

TUESDAY 8.00 p.m. Badminton Club

THURSDAY

FRIDAY

SATURDAY 10.00 a.m. 'Open House' Coffee Morning - first Saturday of the month

MONTHLY MEETINGS

Thirsty For??	7.00 p.m.	2nd Thursday
A.C.T.I.O.N	2.00 p.m.	4th Thursday
House Groups	7.30 p.m.	2nd Tuesday - Please speak to Stewards for more details.

March Newsletter Deadline:

Articles are welcomed at any time, but the deadline for last minute items is **19th February 2023**.

Articles can be e-mailed to sue.spaul@hotmai.co.uk or placed in the newsletter box in the front foyer. Thank you